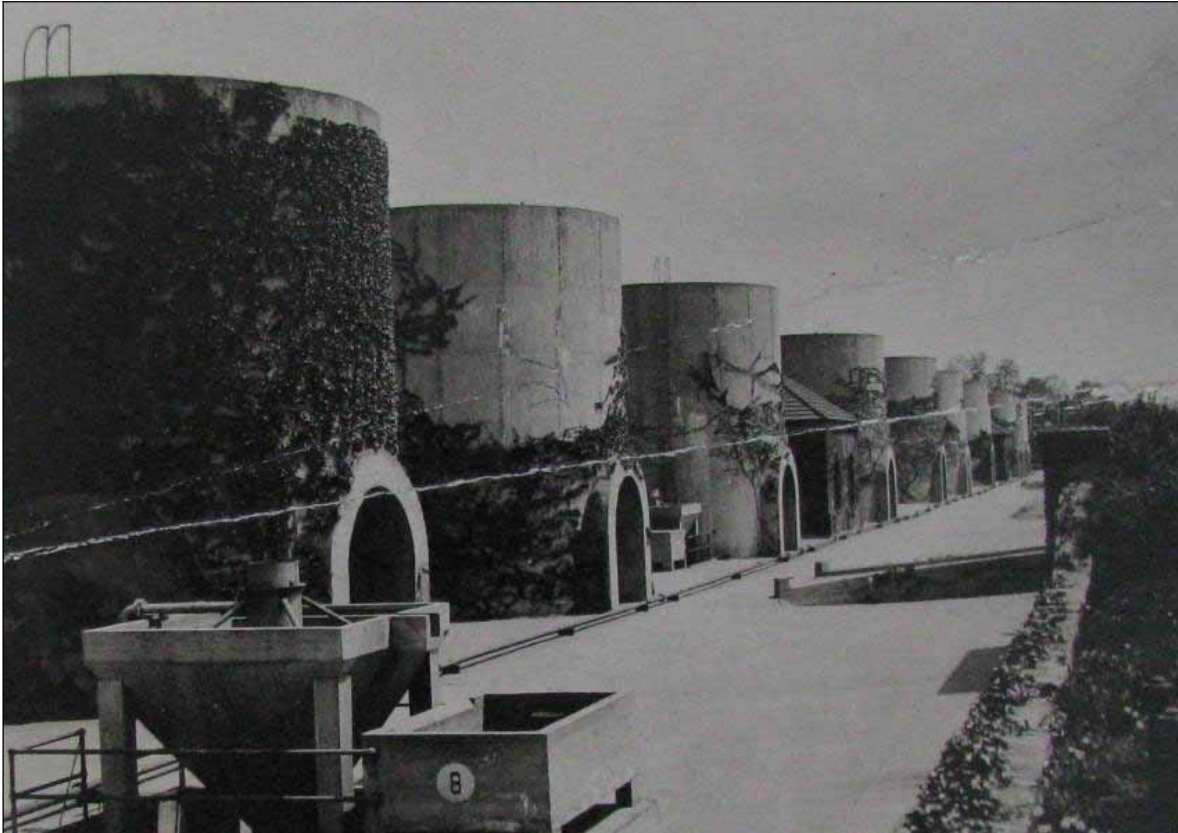


# MCMILLAN SLOW SAND FILTRATION PLANT

---

## Historic Preservation Report for the Proposed Redevelopment of the McMillan Slow Sand Filtration Plant

FINAL DRAFT  
JULY 28, 2010



---

Prepared by: EHT Tracerics, Inc.  
Prepared for: Vision McMillan Partners

# TABLE OF CONTENTS

<b>Introduction.....</b>	<b>3</b>
I. Introduction to The McMillan Site .....	3
II. Description of the McMillan Redevelopment Project.....	4
III. Purpose of Historic Preservation Report.....	4
IV. Contents of the Historic Preservation Report .....	6
V. Definitions .....	6
<b>Chapter 1: Site Description and Resource Inventory .....</b>	<b>8</b>
I. Site Description.....	8
II. Inventory of Historic Resources at the McMillan Site.....	12
<b>Chapter 2: Historic Significance .....</b>	<b>65</b>
I. Summary Chronology for the McMillan Park Reservoir Historic Landmark.....	65
II. Historic Significance of the McMillan Park Reservoir Historic Landmark .....	66
III. Historic Significance of the McMillan Site .....	70
IV: Relative Level of Significance of Individual Resource Types.....	70
<b>Chapter 3: Historic Integrity .....</b>	<b>73</b>
I. Historic Integrity of the Slow Sand Filtration Plant.....	73
II. Historic Integrity of the Designed Landscape.....	80
III. Historic Integrity of Individual Resources.....	81
<b>Chapter 4: Preservation Recommendations .....</b>	<b>82</b>
I. General Recommendations .....	83
II. Resource-Specific Treatment Recommendations .....	84
III. Mitigation Recommendations.....	89
<b>Chapter 5: Historic Preservation Reviews .....</b>	<b>97</b>
I. Letter of Commitment (2007) .....	98
II. Historic Resources Covenant (1987).....	98
III. Planned Unit Development Review .....	100
IV. District of Columbia Undertaking Review .....	101
V. Comprehensive Plan for the National Capital .....	102
VI. Commission of Fine Arts Review.....	103
VII. Historic Preservation Procedural Summary .....	104
<b>Bibliography .....</b>	<b>105</b>

Filter Beds – Existing Conditions (EHT Tracerics, Inc., 2008)



Typical interior of filter bed



Interior filter bed No. 24



Interior of filter bed No. 24, collapse of eastern cells.



Cracking and efflorescence of concrete structure